

# 2000 series - multiple unit

PETER SAVAGE 2000 SERIES

43 / 75mm Deep Multiple Hinged & Locking Access Cover & Frame

**Product loading codes:**

- PS2001 – F.A.C.T.A Class AA 5 tonne G.L.V.W
- PS2002 – F.A.C.T.A Class AAA 10 tonne G.L.V.W
- PS2004 – F.A.C.T.A Class B 44 tonne G.L.V.W
- PS2007 – F.A.C.T.A Class FL Forklift Loading

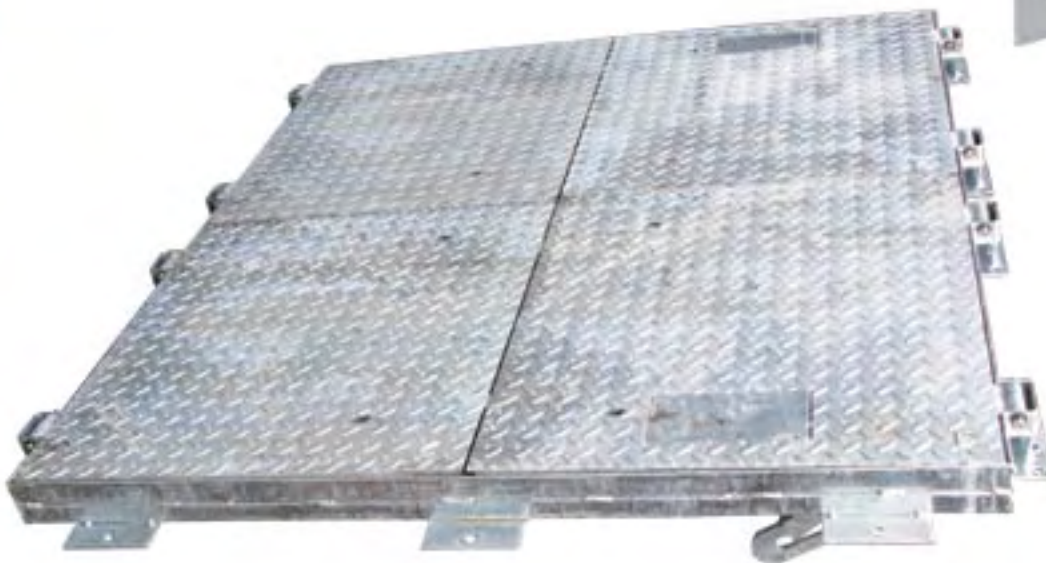
G.L.V.W = Gross Laden Vehicle Weight

**Sizes:**

Units are manufactured to suit customer chamber sizes



Typical beam & bolt on support pocket detail.



Any configuration of covers available i.e. 4 part / 6 part / 8 part etc.

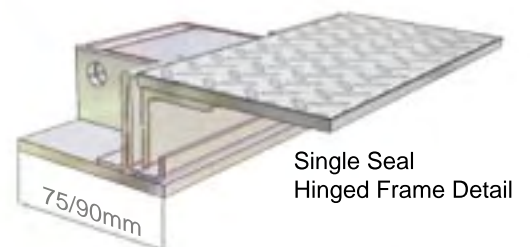
**2000 series features :**

- Chequer plate solid top lids • Underbraced where required to meet stated load ratings •
- Hinged lids complete with self locating staybar and 'Lock & Lift' devices as standard •
- Supplied single seal as standard • Available as double seal •
- Supplied with necessary support beams and site fitted support pockets •
- 43mm deep frame up to 2000 x 2000mm clear openings & 75mm thereafter •
- Manufactured under an ISO 9001:2000 Quality System •
- **Finish:** Hot dipped galvanised to BS EN ISO 1461 as standard •

**Optional Extras:** Double seal. Locking with M.O.D. approved security screws, Locking with high security screws, Recessed Padlock Point. Neoprene seal, Peephole inspection point. Flush fitting engraved plate indicating which service i.e. Water, Gas, and Electricity etc.

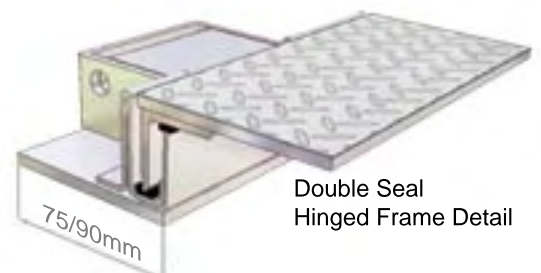
**Specification / Ordering:**

Please choose the required load rating code and state opening required and any optional extras i.e. PS2007 2100 x 1270mm clear opening, locking with M.O.D. approved security locking.



Single Seal Hinged Frame Detail

90mm on hinge face only



Double Seal Hinged Frame Detail