

2200 series - twin unit

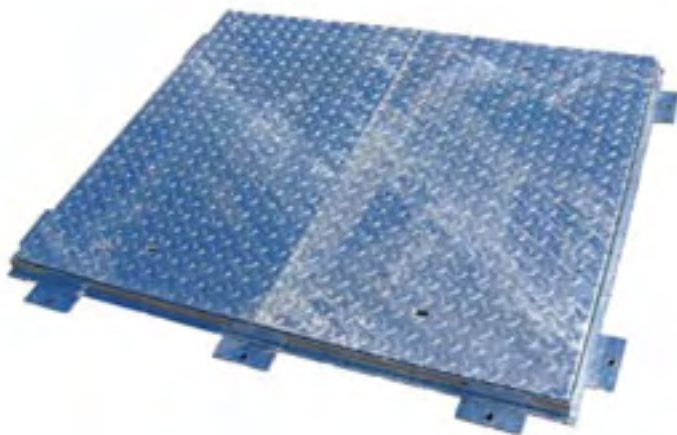
PETER SAVAGE 2200 SERIES
43mm Deep Twin Forklift Loading Access Cover & Frame

Product loading code:
PS2207 – F.A.C.T.A Class FL 11.5 tonne S.M.W.L

S.M.W.L = Slow Moving Wheel Load

Standard Sizes: (clear opening)

Suffix = L = 1200 x 600mm	Suffix = R = 1500 x 900mm
Suffix = M = 1200 x 750mm	Suffix = T = 1800 x 600mm
Suffix = N = 1200 x 900mm	Suffix = V = 1800 x 750mm
Suffix = P = 1500 x 600mm	Suffix = W = 1800 x 900mm
Suffix = Q = 1500 x 750mm	Non-standard sizes available



2300 series - single unit

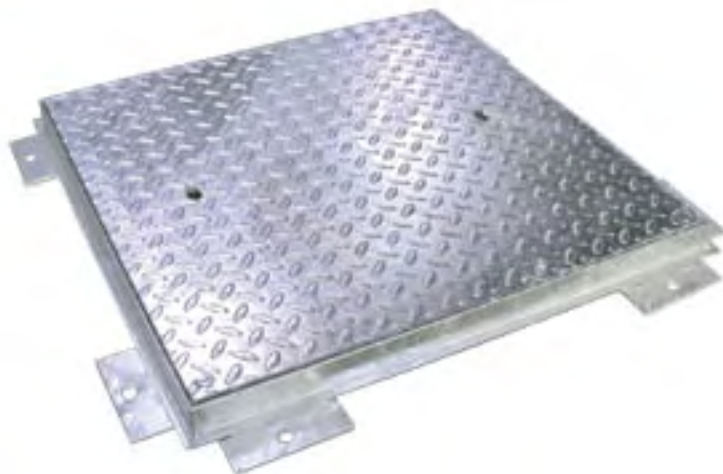
PETER SAVAGE 2300 SERIES
43mm Deep Forklift Loading Access Cover & Frame

Product loading code:
PS2307 – F.A.C.T.A Class FL 11.5 tonne S.M.W.L

Standard Sizes: (clear opening)

Suffix = A = 300 x 300mm	Suffix = F = 750 x 750mm
Suffix = B = 450 x 450mm	Suffix = G = 900 x 600mm
Suffix = C = 600 x 450mm	Suffix = H = 900 x 750mm
Suffix = D = 600 x 600mm	Suffix = J = 900 x 900mm
Suffix = E = 750 x 600mm	Suffix = K = 1000 x 1000mm

Non-standard sizes available



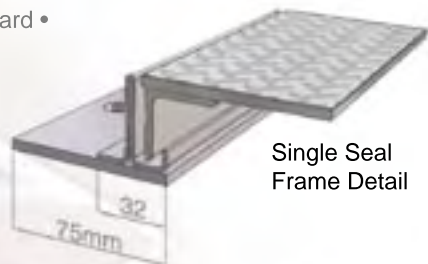
2200 & 2300 series features :

- Chequer plate solid top lids • Heavily underbraced • Frame fixing points fitted as standard •
- Supplied single seal as standard • Available as double seal •
- Twin units have a centre removable beam •
- Manufactured under an ISO 9001:2000 Quality System •
- For Kitemarked version see KS10 series in section F •
- **Finish:** Hot dipped galvanised to BS EN ISO 1461 as standard •

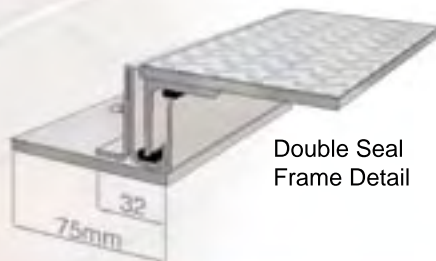
Optional Extras: Double seal. Locking 4 stainless screws. Locking with M.O.D. approved security screws, Locking with high security screws, Lock and lift devices, Neoprene seal, Peephole inspection point. Flush fitting engraved plate indicating which service i.e. Water, Gas, and Electricity etc.

Specification / Ordering:

Please choose the size reference suffix stating any optional extras i.e. PS2307E Double seal, locking 4 screws.



Single Seal
Frame Detail



Double Seal
Frame Detail

FM 37789
BS EN ISO
9001:2000



Nuneaton **TEL** +44 (0) 24 7664 1777
FAX +44 (0) 24 7637 5250
E-MAIL steel@peter-savage.co.uk

Wakefield **TEL** +44 (0) 1924 258 381
FAX +44 (0) 1924 258 382
E-MAIL wakefield@peter-savage.co.uk

