

700 series - single unit

PETER SAVAGE 700 SERIES

65mm Deep Watertight Solid Top Access Cover & Frame
Unit prevents the ingress of surface water.

Product loading codes:

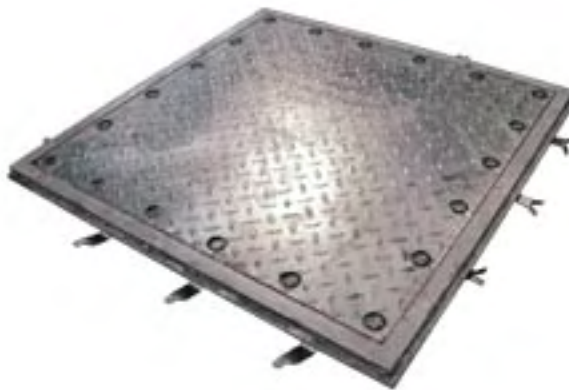
PS701 – F.A.C.T.A Class AA 5 tonne G.L.V.W
PS702 – F.A.C.T.A Class AAA 10 tonne G.L.V.W
PS704 – F.A.C.T.A Class B 44 tonne G.L.V.W
PS707 – F.A.C.T.A Class FL Forklift Loading

G.L.V.W = Gross Laden Vehicle Weight

Standard Sizes: (clear opening)

Suffix = A = 300 x 300mm Suffix = F = 750 x 750mm
Suffix = B = 450 x 450mm Suffix = G = 900 x 600mm
Suffix = C = 600 x 450mm Suffix = H = 900 x 750mm
Suffix = D = 600 x 600mm Suffix = J = 900 x 900mm
Suffix = E = 750 x 600mm Suffix = K = 1000 x 1000mm

Non-standard sizes available



750 series - single unit

PETER SAVAGE 750 SERIES

105mm Deep Pressure Tight Solid Top Access Cover & Frame

*Heavily underbraced to ensure rigidity under pressure

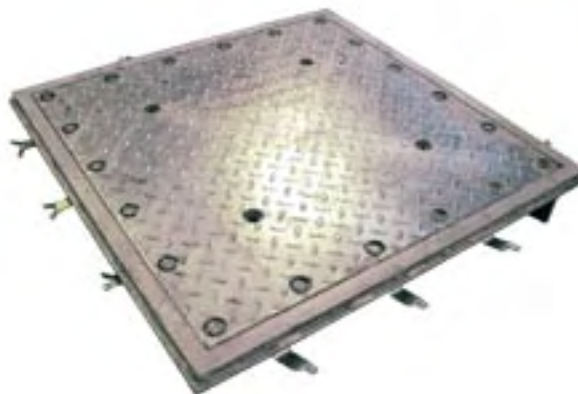
Unit capable of sustaining a
10 metre head of water (1 bar pressure)

Product loading codes:

PS754 – F.A.C.T.A Class B 44 tonne G.L.V.W
PS757 – F.A.C.T.A Class FL Forklift Loading
G.L.V.W = Gross Laden Vehicle Weight

Standard Sizes: (clear opening)

Suffix = A = 300 x 300mm Suffix = F = 750 x 750mm
Suffix = B = 450 x 450mm Suffix = G = 900 x 600mm
Suffix = C = 600 x 450mm Non-standard sizes available
Suffix = D = 600 x 600mm
Suffix = E = 750 x 600mm



700 / 750 series features :

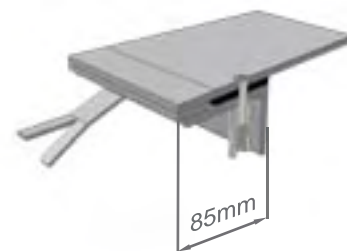
- Chequer plate solid top lids
- Underbraced where required to meet stated load ratings
- Cover locked onto frame with stainless steel countersunk allen key head screws at approximately 100mm centres
- Lid/frame interface fitted with a semi-cured neoprene seal
- Frame fitted with fishtails for casting into concrete floor
- Manufactured under an ISO 9001:2000 Quality System

Finish:

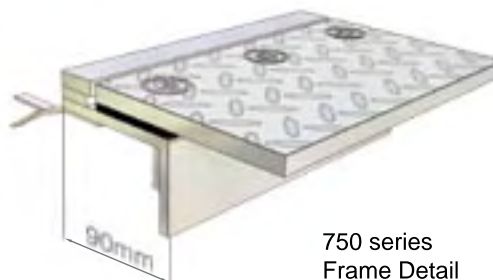
Hot dipped galvanised to BS EN ISO 1461 as standard.

Specification / Ordering:

Please choose the required load rating code and size reference suffix, i.e. PS757F



700 series
Frame Detail



750 series
Frame Detail